



New Beginnings - Homes Transition Townhall for Residents and Families

November 2014



Today's Agenda

- Introduction
- Commitment to our Residents
- Background
- Current Status
- Presentation by St. Joseph's Care Group
- Presentation by North West Community Care Access Centre
- Open Forum - Questions



Commitment to Our Residents

Mission Statement

We provide resident-centered long term high quality care and support for people who can no longer have their physical, emotional, spiritual and social needs met in a community setting.



Continued Commitment

The City's remaining Municipally run home

Pioneer Ridge



Background

- 2005 - City advised the Ministry of Health and Long Term Care (Ministry) that the City would be closing Grandview Lodge and Dawson Court, thereby discontinuing the operation of 300 of its 450 long term care beds as of January 1, 2009
- The City supported the agreement between the Ministry and St. Joseph's Care Group (SJCG) to replace the 300 beds as part of a larger Centre of Excellence for Integrated Seniors Services (CEISS)
- In the best interest of our residents and their families, City staff and the Community, the City agreed to continue operating the two homes until the 300 beds at the new facility were available



Current Status

- On September 19, 2014 draft closure plans were submitted to the MOHLTC (very high level)
- Dawson Court Residents - first of the two City Homes transitioned
- Several City Committees/Working Groups
- SJCG has welcomed City Reps on many of their Committees/Working Groups
- Working with CCAC on the process for our residents
- Hosting Townhalls with our bargaining units for Homes staff



Key Partnerships

- Residents/Families
- City Administration
- CCAC
- SJCG
- NWLHIN
- Bargaining Units (UNIFOR, ONA & CUPE)
- Volunteers



Communication Plans

- New Beginnings - Monthly Newsletter & Information Board
- Resident Council Meetings
- Fall 2014 Townhalls
 - Resident Only
 - Staff & Resident
- Spring 2015 Townhalls



Welcome

**Tracy Buckler, President & CEO of
St. Joseph's Care Group**



ST. JOSEPH'S CARE GROUP



St. Joseph's Care Group

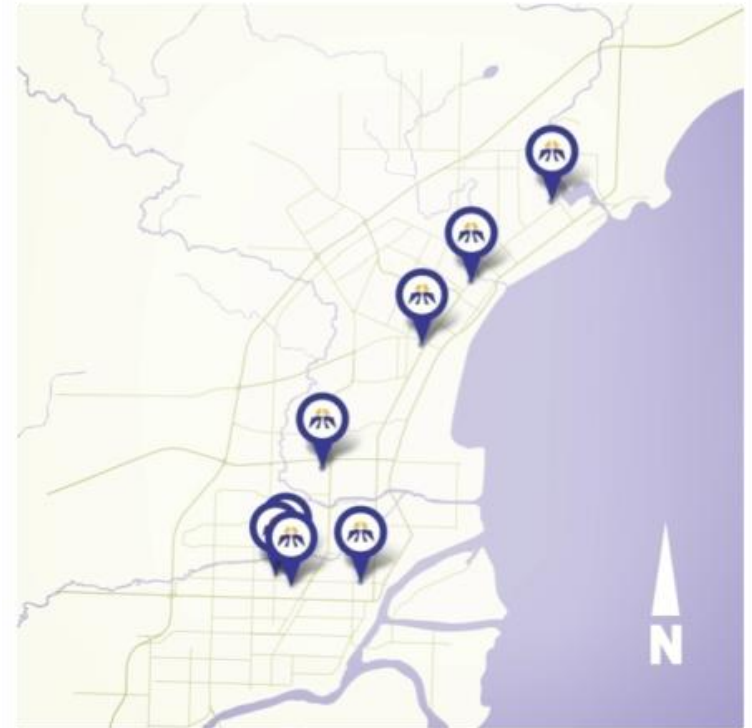


*Care
Compassion
Commitment*

Our Sites

- St. Joseph's Hospital (Corporate Office)
- Balmoral Centre
- Behavioural Sciences Centre
- Hogarth Riverview Manor
- Lakehead Psychiatric Hospital
- Sister Leila Greco Apartments
- Sister Margaret Smith Centre
- St. Joseph's Health Centre
- St. Joseph's Heritage

Thunder Bay, Ontario



Core Program Areas

- Addictions & Mental Health
- Rehabilitative Care & Chronic Disease Management
- Seniors' Health

Client-Centred Care

- SJCG supports environments that acknowledge each client's individual needs and preferences.
- Our staff are known for their commitment to providing compassionate and respectful care.



Our Commitment to Seniors' Health

- Long-Term Care Homes
- Hogarth Riverview Manor
- Regional Behavioural Health Services
- Bethammi Nursing Home
- Long-Term Care Housing & Support
- Sister Leila Greco Apartments
- PR Cook Apartments
- Manor House Adult Day Program
- Day Hospital
- Geriatric Assessment Program

CEISS Project Update

Centre of Excellence for Integrated Seniors' Services

Centre of Excellence – Phase 1

Sister Leila Greco Apartments

- Opened January 2013
- 132 one-bedroom units
- Fully occupied

Centre of Excellence – Phase 2

Hogarth Riverview Manor Expansion: Building Excellence

- Groundbreaking May 2013
- Seven-storey building beside HRM
- 416 long-term care beds
- Expected completion, fall 2015

Centre of Excellence – Phase 3

Hogarth Riverview Manor Addition

- 32-bed addition to existing HRM
- Construction start date, 2015
- Expected completion, 2016

Centre of Excellence – The Link

Community Hub with:

- Hairdressing Shop
- Convenience Store and Café
- Pharmacy
- Volunteer Services
- Physiotherapy Clinic
- Dental Clinic
- Physician Practices
- ...and more

Construction start date, late 2014.
Expected completion, fall 2015.

Progress in Pictures



ST. JOSEPH'S CARE GROUP

hrmfeedback@tbh.net

Progress in Pictures



ST. JOSEPH'S CARE GROUP

hrmfeedback@tbh.net

Progress in Pictures



Progress in Pictures



Progress in Pictures



ST. JOSEPH'S CARE GROUP

hrmfeedback@tbh.net

Progress in Pictures



Progress in Pictures



ST. JOSEPH'S CARE GROUP

hrmfeedback@tbh.net

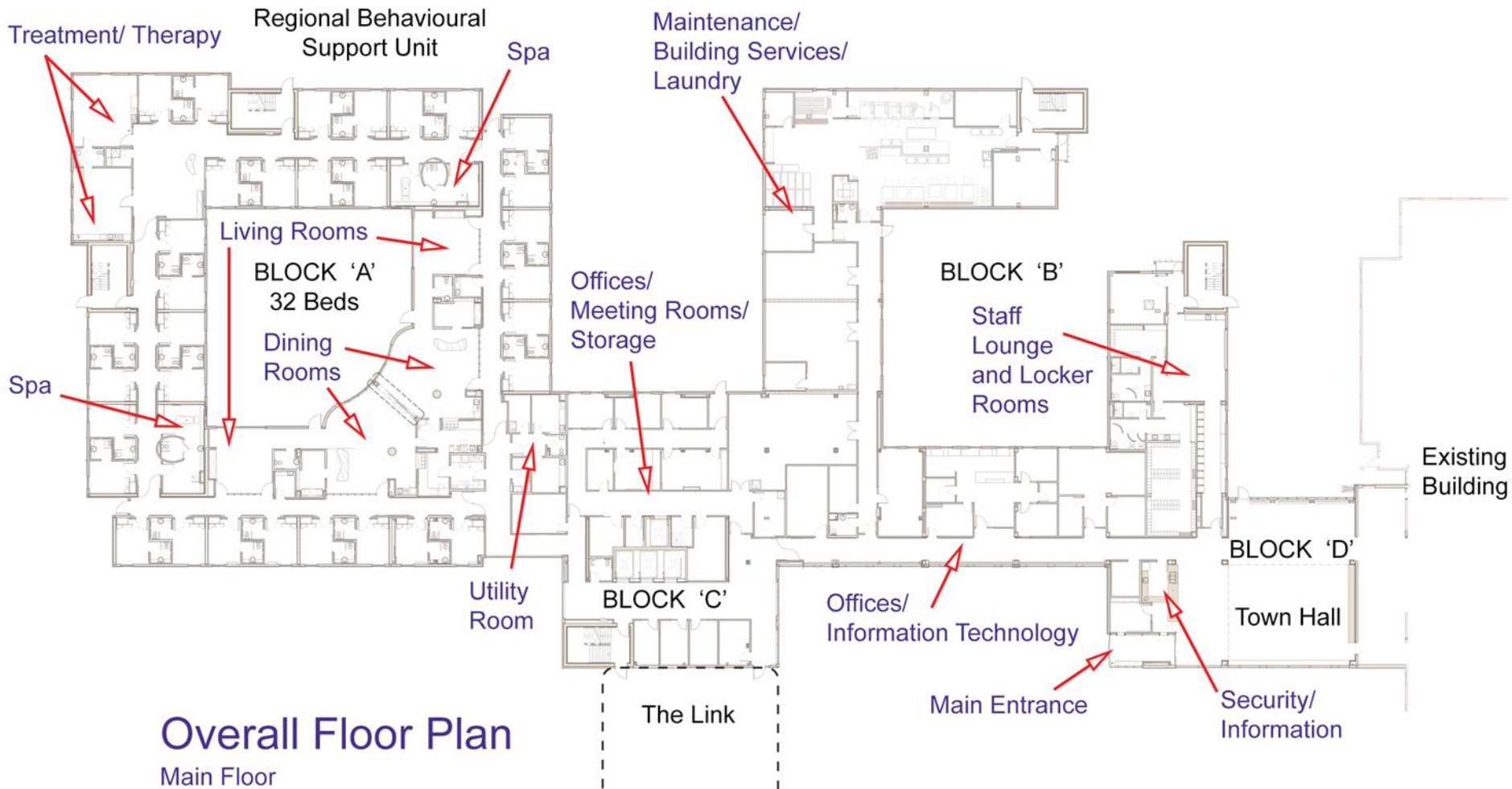
Progress in Pictures

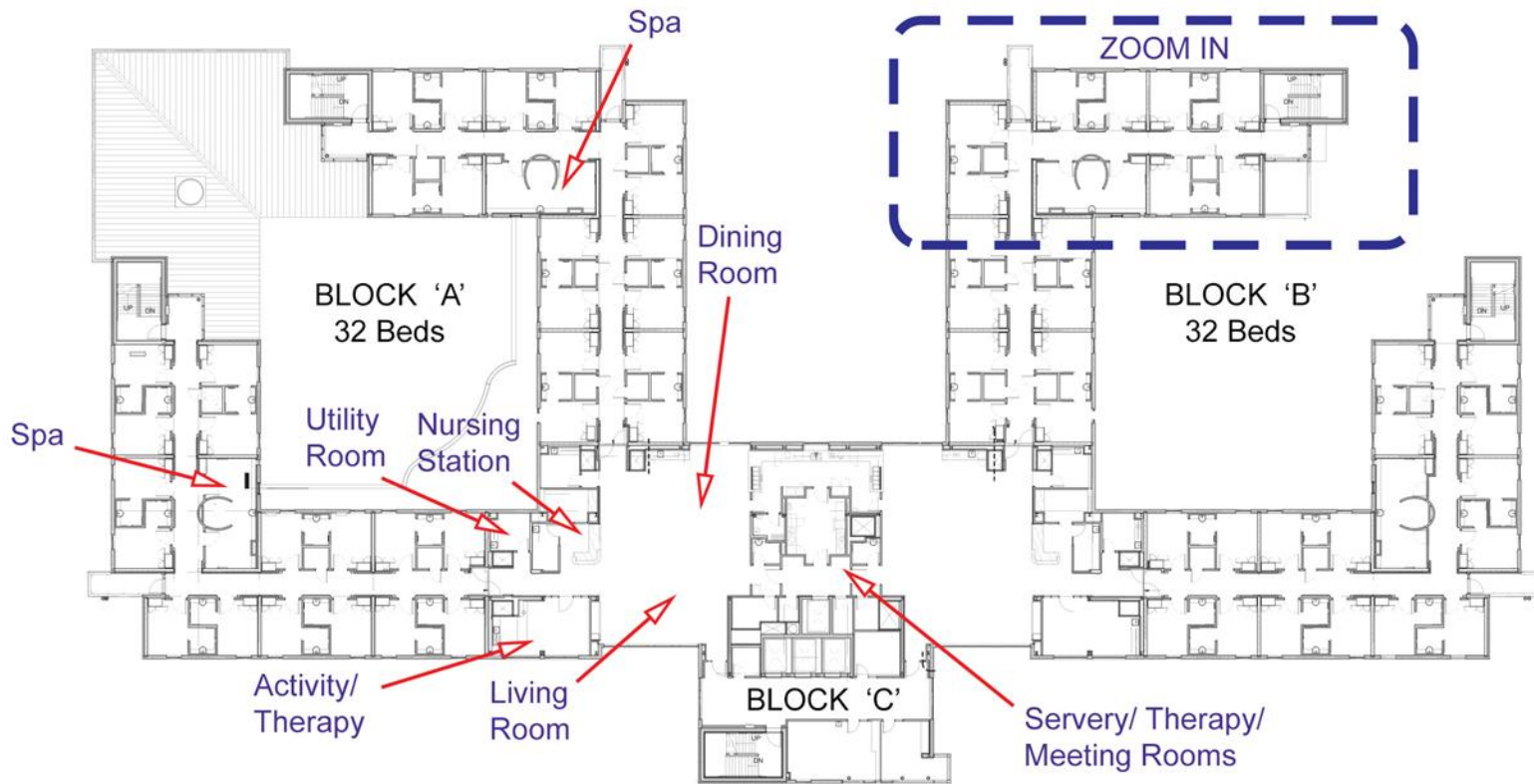


ST. JOSEPH'S CARE GROUP

hrmfeedback@tbh.net

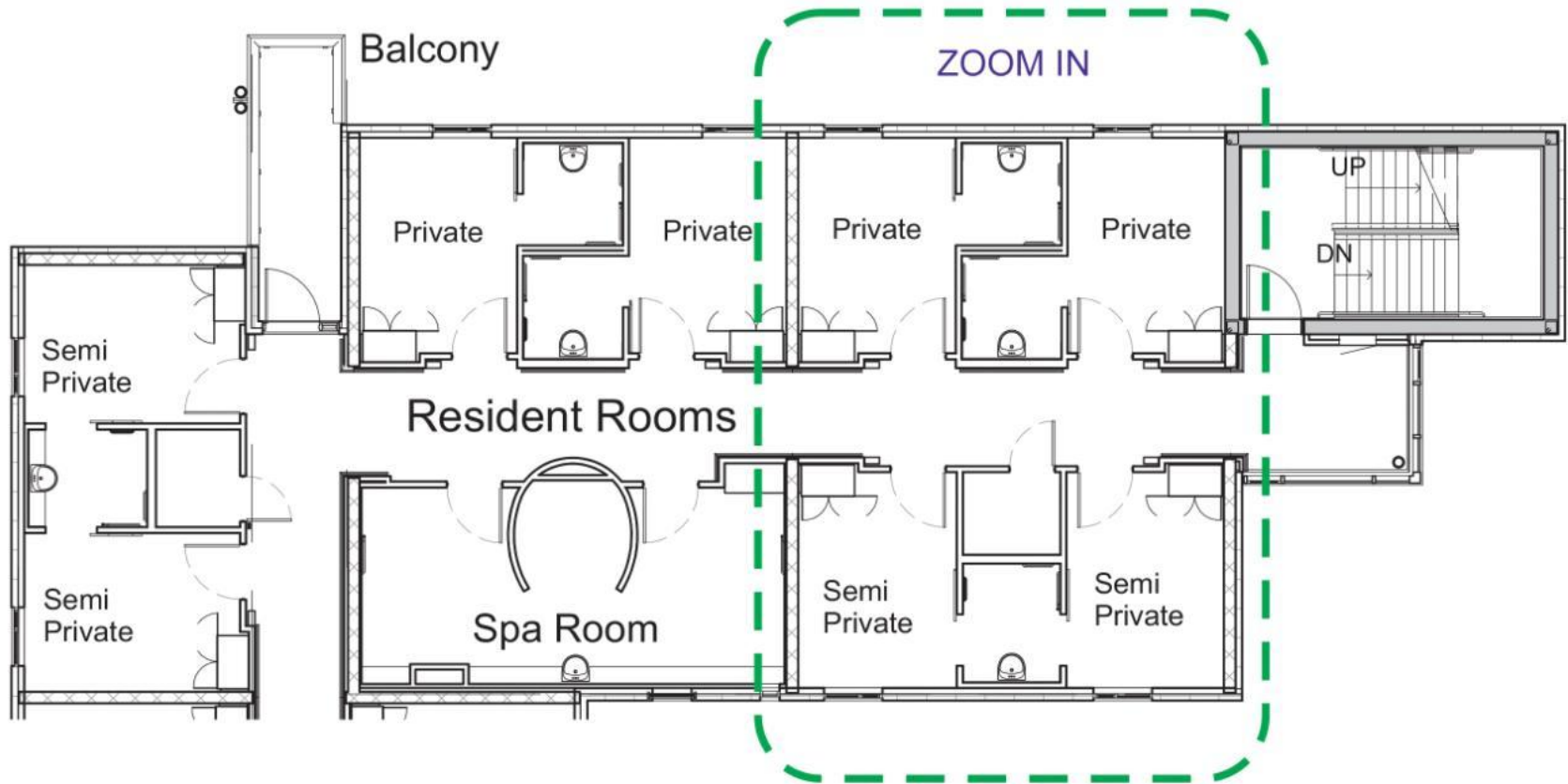
Floor and Room Design



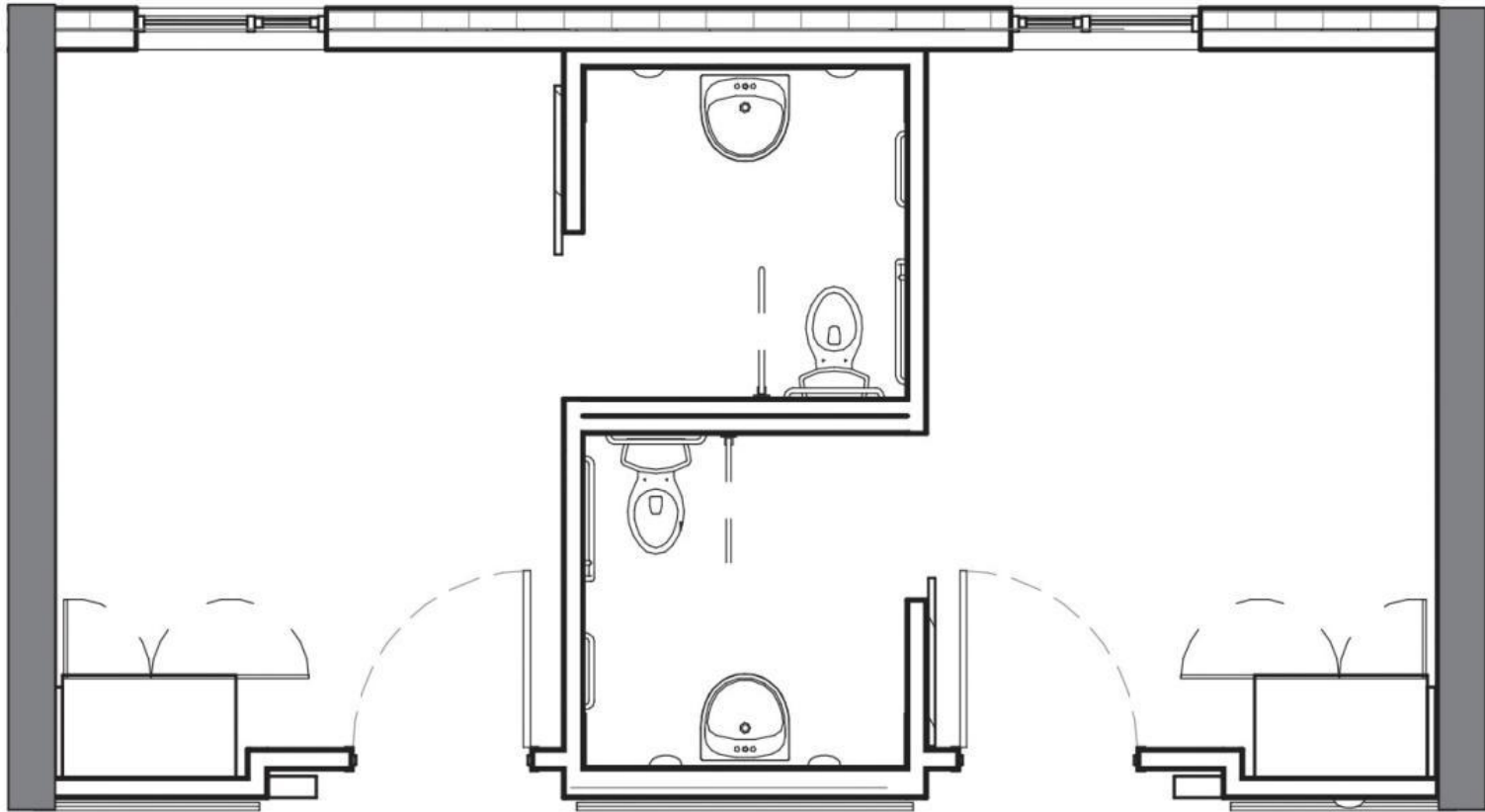


Overall Floor Plan

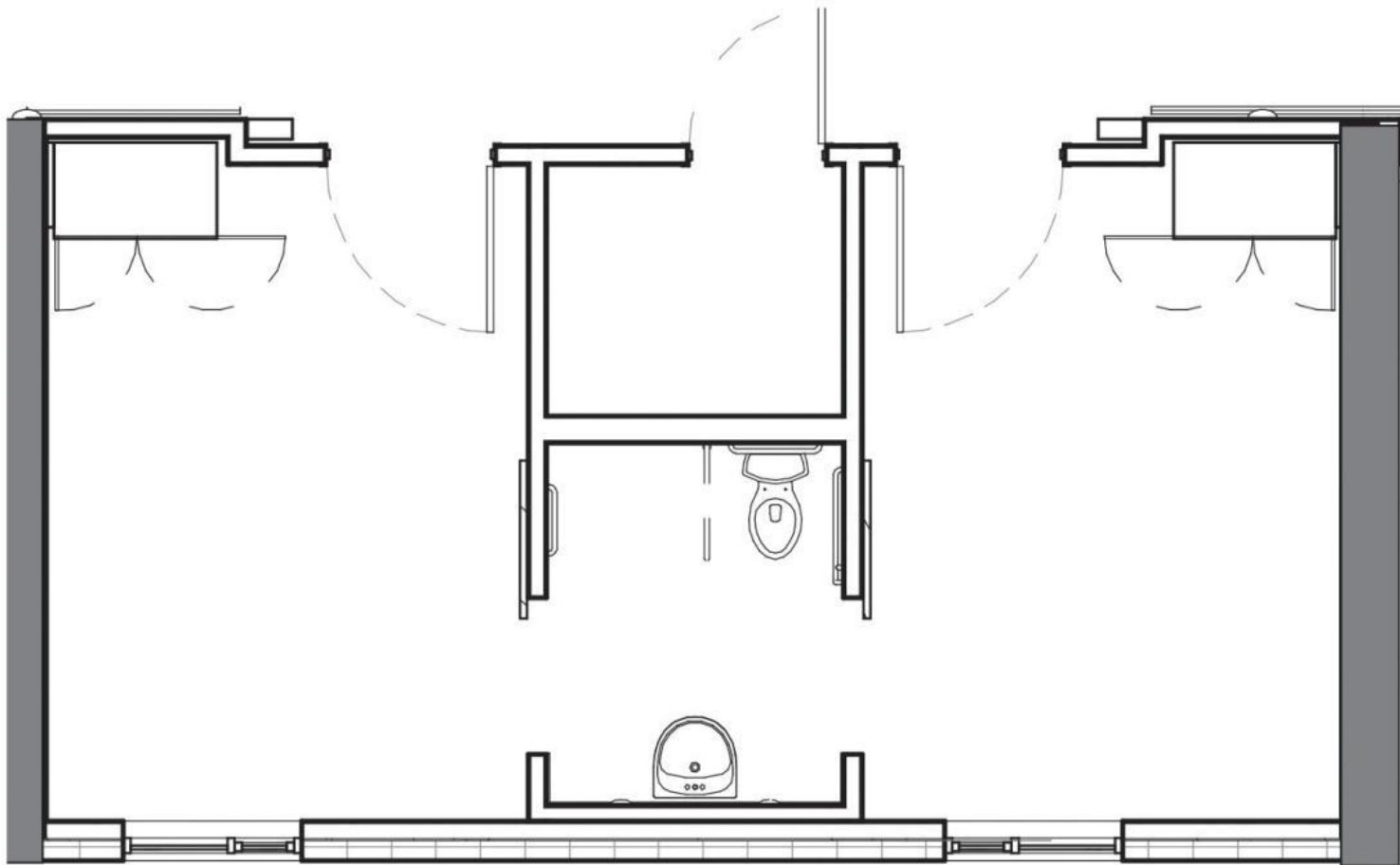
Floors 2 to 7



Resident Rooms



Typical Resident Room: Private



Typical Resident Room: Semi Private

Timeline

- August 2015 – We get the keys to the 416-bed expansion
- Fall 2015 – The Link opens
- October 31, 2015 – HRM Expansion doors officially open
- November 2015 – Resident moves begin (to the Expansion)
- Fall 2015 to June 2016 – 32 new beds added to existing HRM
- June 2016 – Resident moves begin to newly-renovated HRM (the Addition)

Webcam and Feedback

Live Webcam



Please visit us at **www.sjcg.net**

Questions? Email

hrmfeedback@tbh.net



ST. JOSEPH'S CARE GROUP

hrmfeedback@tbh.net

Welcome

Kevin Chony, Community Care Manager
North West Community Care Access Centre





Access and Admission to the Hogarth Riverview Manor Expansion for Dawson Court and Grandview Lodge Residents

Kevin Chony, Client Services Manager

Respect For Residents is Fundamental


- Respect residents' values and preferences throughout the process, from planning to admission.
- The CCAC plays a key part in Counseling and preparing the resident for admission to a new LTCH.
- Help ensure the process is as transparent, smooth, and equitable as possible.
- Create coordinated and consistent messages for residents.
- Keep residents informed.

First Steps to Making a Choice

You will receive a package from your LTCH including information from both CCAC and SJCG.



You will meet privately with your LTCH and/or CCAC to review choices and options.

You will make choices on a new Facility Choice Sheet (FCS).



North West
CCAC CASC
Community
Care Access
Centre Centre d'accès
aux soins
communautaires
du Nord-Ouest

Selecting a Long-Term Care Home



Ontario



Questions?

North West Community Care
Access Centre
(807) 345-7339
(800) 626-5406

Open Forum - Questions



ST. JOSEPH'S CARE GROUP



North West
CCAC CASC
Community
Care Access
Centre
Centre d'accès
aux soins
communautaires
du Nord-Ouest



Feedback and Evaluations

