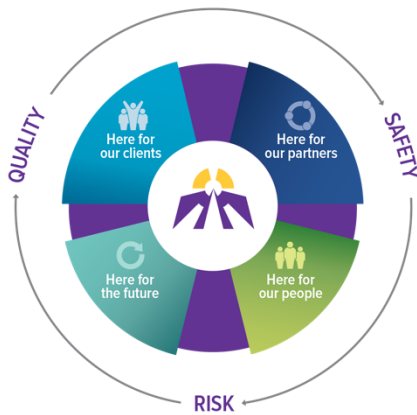


MISSION MOMENT

"We are grateful for the excellent care our mother received at St. Joseph's Hospital (5 South). All staff (clinical and non-clinical) worked together in a respectful and compassionate way to keep her safe and well cared for. We appreciate the physical therapists who continually reassessed her needs and provided the equipment so that she regained strength and speech. Our mother continues to be social and enjoys many activities thanks to you all."

Family, Geriatric Assessment & Rehabilitative Care



As we advance our vision of becoming a leader in client-centred care, we plan through the lens of Quality, Safety and Risk. Our **Strategic Plan 2016-2020** will focus on four key Strategic Directions:

Here for Our Clients

We will address unmet needs through our programs and services

Here for Our Partners

We will collaboratively define our role in the provision of care for our communities

Here for Our People

We will work to advance our culture and continue our caring mission with our staff and volunteers

Here for Our Future

We will plan for continued financial sustainability

HERE FOR OUR

Clients

DBT Skills Group

Sister Margaret Smith Centre is marking four years of offering a community-based Dialectical Behaviour Therapy (DBT) Skills Group for our clients. The groups are run consecutively over the year in partnership with community agencies such as Thunder Bay Counseling, Alpha Court, Dilico and Norwest CHC. Clients learn to increase their ability to practice mindfulness, tolerate stressful situations, work more effectively with intense emotions and build and improve relationship skills.

Java Music Program

Bethammi Nursing Home Life Enrichment began implementing the newly-purchased Java Music package in December. The program was a great success, encouraging residents to openly share life stories and emotions. The Java Music program will be offered weekly, off the units as much as possible to provide a more private environment for the residents who attend.

Leadership Team Report

February 2019



Family and Caregiver Peer Support Group

Spiritual Care will be holding Support Groups for family and caregivers of residents living with dementia, illness or other disabilities, families navigating long-term care or living with grief and loss of a loved one. There will be 6 sessions between January 23rd and February 27th in the chapel at Hogarth Riverview Manor.

Hogarth Riverview Manor Christmas Parties

We would like to publicly recognize and thank the families and the Therapeutic Recreation staff of HRM for all of their dedication and support in hosting unit-based Christmas parties for our residents. In addition, many individual family gatherings were held throughout the home during the holiday season.

Blue Christmas

Blue Christmas services were offered to clients in Senior's Supportive Housing providing an opportunity of support for those grieving through the holiday season. Those who had passed away were recognized by their loved ones in a candle ceremony followed by a social offering fellowship amongst clients.

Regional Geriatric Programs of Ontario – Inventory of NW LHIN Services

The Ministry of Health and Long Term Care, in collaboration with the Regional Geriatric Programs of Ontario Leadership Office engaged in an Asset Mapping process for Specialized Geriatric Services across the province and issued a time sensitive request prior to Christmas. The RSCP Manager and SJCJG Decision Support team worked with our partners across the North West to compile, input, and submit the data into an electronic portal.

HERE FOR OUR

Partners

Feeding Your Mind, Body and Soul Event

Karen Degagne and Karrin Steudle from the Eating Disorder Program team collaborated with Lakehead University to plan a week of activities focused on "Feeding Your Mind, Body and Soul" in order to raise awareness of healthy eating. These activities occurred during the week of Jan. 28-Feb. 1. As part of the events for the week, they assisted with developing displays on Body Image and delivered a presentation on the subject for students and staff.

Consultation and Training Support

Karen Degagne and Karrin Steudle also assisted a dietician from the Thunder Bay District Health Unit in developing a training program for their mental health clinicians related to nutrition and mental health. Resource materials for our Eating Disorders Program were provided and included in the training package.

Hogarth Riverview Manor Recipient of Lowe's Local Heroes Donation

Each year Lowe's Canada launches "It's Hero" Campaign through a fundraising campaign and a corporate donation. This year, St. Joseph's Care Group was chosen with special interest in the Horticultural Therapy Program at Hogarth Riverview Manor. Lowe's raised \$4,279.19 towards this program. Horticulture Therapy utilizes plants, gardening resources, and activities to improve the social, psychological, physical and cognitive wellbeing of residents.

Care
Compassion
Commitment

Leadership Team Report

February 2019



Regional Rehabilitative Care Program

The Regional Rehabilitative Care Program (RRCP) visited Sioux Lookout First Nation Health Authority (SLFNHA) Primary Care Team (PCT) and Meno Ya Win Hospital on December 19 and 20. They discussed the sustainability of the Elder Exercise Program in the Northern Sub-Region communities with northern partners to support these communities. The SLFNHA PCT will travel with the RRCP and the VON Kinesiologist to Fort Severn and North Caribou Lake First Nation in January and February.

For Meno Ya Win (MYW), the site visit was an opportunity to share the Osteoarthritis Conservative Management program (GLA:D), as this site will be starting to deliver and discuss other rehabilitation needs and opportunities.

Regional Outreach for Falls Prevention

Denise Taylor, RRCP Manager, presented with the VON Falls Prevention Coordinator Tiffany Gervasi, on December 6, the "Elders Exercise and Falls Prevention Program - Improving Access to Rehabilitation through Collaborative Partnerships" through the Healthy Living and Cancer Prevention Screening Series to 17 OTN participants.

Reflection Room

St. Joseph's Care Group and Lakehead University's Centre for Education and Research on Aging & Health collaborated with St. Elizabeth (SE) Health to install the Reflection Room in the Contemplation Space at St. Joseph's Hospital from October 27 to November 26. The Reflection Room is a project led by the SE Health Research Centre, which aims to leverage the power of shared storytelling and experiential design to engage people in thinking and talking about end of life, grief and loss. The room was open to clients, staff and the public. Individuals visiting the space had the opportunity to reflect on their experiences and to write a thought down and post it on the wall. The space contained reflections from other individuals collected from across the country. The Regional Palliative Care Program (RPCP) will facilitate the installation of a Reflection Room to communities interested across the region.

Regional Palliative Care Program

On November 13th and 14th the Regional Palliative Care Program (RPCP) brought together representatives from nine local health hub palliative care committees to discuss common palliative care priorities, share local projects and how the RPCP Program and Advisory Committee can support their work at the local level. The RPCP is in the process of refreshing the advisory committee and strengthening the collaboration and connection with the committee to the local health hub palliative care committees.

The RRCP delivered an Advance Care Planning workshop, 'There's No Place Like Home' at the 55 Plus Health Center on November 17th. More than 75 participants were in attendance.

The RPCP is collaborating with Hospice Northwest to deliver "A Palliative Approach to Care for workers who Support People who are Homeless in Canada" to local partners who provide services to the vulnerably housed and homeless who have chronic or life-limiting illnesses. It is intended to provide useable and practical information about integrating a palliative approach to care with the existing knowledge and expertise workers have regarding a harm reduction approach, relationship development, and meeting people "where they're at".

HERE FOR OUR

People

Take the Stairs Campaign

Wellness Committee members, Kaitlyn McFall, Therapeutic Recreationist, and Cara Green, Registered Dietitian, helped launch the *"Take the Stairs Campaign"* on January 23, 2019 at St. Joseph's Hospital. The campaign encouraged both staff and clients to take the stairs for the day, while raising awareness about how taking the stairs regularly can positively impact cardiovascular health and overall well-being.

Dietitians' Conference

Sister Margaret Smith Centre served as a live streaming site for a group of dietitians in Thunder Bay to participate in a one-day conference, "Advances in Nutrition." There were 10 Registered Dietitians and 3 Interns who signed up for the event. This was a very informative and cost effective way for all of these professionals to access up-to-date information with their colleagues from across the province.

Mock Code White Drills

Mock Code White drills were implemented to enhance safety in the Mental Health Rehabilitation inpatient settings. The objective of the mock drills is to review principles of Non-Violent Crisis Intervention Training (NVCI) including de-escalation techniques and restraint use in crisis situations when managing aggressive behavior. Overall, the mock Code White drills have gone well with excellent response from staff within the facility. Additional drills will take place in February and will continue on a quarterly basis thereafter.

Long-Term Care Management Team

Sheila Clark has accepted the position of Administrator for HRM. Sheila brings a wealth of Long Term Care experience from her previous roles as a Director of Care and as a Long Term Care Homes Inspector with the Ministry of Health and Long Term Care. Most recently Sheila joined St. Joseph's Care Group as the Director of Care/Clinical Manager at Bethammi Nursing Home.

Two new Clinical Managers began at HRM in January 2019. Connie Coda is an RN, and has acquired a wide range of nursing experience in acute care, complex continuing care and in community nursing both with a home care agency as well as with the North West LHIN. Connie will be managing Birch and Spruce Groves and the BSU. Lisa Miedema is an RN who comes to us with extensive knowledge in quality improvement and experience in research nursing, most recently from Thunder Bay Regional Health Sciences Centre as a Clinical Research Coordinator. She is currently managing Floors 2 & 3.

Beverly Gellert accepted the Clinical Manager/Director of Care position with Bethammi Nursing Home. Bev comes to Bethammi with extensive RN and management experience across the health care continuum. She also has experience as a Long Term Care Homes Inspector with the Ministry of Health and Long Term Care.

Leadership Team Report

February 2019



Indigenous Education Project

The Mission Integration team in collaboration with Corporate Learning, hosted 'First Contact: A Cultural Awareness Discussion' on November 30, December 11 and January 17, 2019. These cultural awareness sessions involved viewing the First Contact documentary followed by a facilitated group discussion.

Student Placements

St. Joseph's Care Group welcomed 188 students in January 2019 to all clinical and non-clinical divisions. For students completing placement in Long-Term Care, Jolene Hynnes, Jacqueline McKinnon, and Tammy McKinnon facilitated classroom orientation sessions to the students and their instructors, and the Corporate Learning team ensured all online orientation requirements were completed.

Retirement & Welcome New Staff

The North West Regional Palliative Care Program bid farewell to Marlene Benvenuto, who retired in October 2018, and welcomed two new team members to the program; Sherri Henderson, the program's telemedicine nurse consultant and Sheri-Lyn O'Leary, the program assistant for the Regional Palliative Care Program, Regional Rehabilitative Care Program and Regional Seniors Care Program (RSCP).

HERE FOR OUR

Future

Dementia Capacity Plan

Alison Denton, Manager of the RSCP supported the North West LHIN to engage relevant stakeholders and informants in order to draft a Dementia Capacity Plan. This included coordination of a two-day Planning Meeting to determine Current and Future State; assistance with identification of key informants to complete surveys, participate in the planning session and 1:1 interviews. SJCG leaders and staff, including Senior Medical Director, Dr. Peter de Bakker and Lisa Petersen, Manager, Specialized Geriatric Services participated.

Capital Updates

East Wing

East Wing deficiency completion is almost complete. The longest outstanding item continues to be completion of the freight elevator; now expected to be turned over by the end of February.

Home for Good Initiative

The purchase of the Thunder Bay Inn is complete. The record of site condition and bylaw amendment has been passed. A building permit will be issued to allow the necessary renovations to begin with an anticipated end date of July 2019. There will be 30 new spaces in our community for people with substance use challenges who are without housing. More information will be shared with respect to the clinical program in the future.