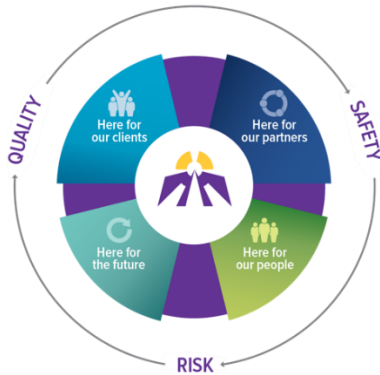


Leadership Team Report

March 2022



As we advance our vision of becoming a leader in client-centred care, we plan through the lens of Quality, Safety and Risk. Our **Strategic Plan 2016-2020** will focus on four key Strategic Directions:

Here for Our Clients

We will address unmet needs through our programs and services

Here for Our Partners

We will collaboratively define our role in the provision of care for our communities

Here for Our People

We will work to advance our culture and continue our caring mission with our staff and volunteers

Here for Our Future

We will plan for continued financial sustainability

An Update on SJCG's Pandemic Response

Programs and Services- With the move from Step 2 to Step 1, visitation restrictions have eased at St. Joseph's Care Group, allowing for better client family support and well-being. Within Seniors' Supportive Housing, visitors may now go directly to the tenant's apartment after providing proof of vaccination, and must follow public health guidelines regarding indoor visits and the dinner program. Along with this ease in restrictions, new isolation guidelines for clients fully vaccinated with a booster dose have dramatically reduced the number of clients required to isolate. Less isolation restrictions means improved therapy and client well-being.

Client Flow- The protected space on 5 South at St. Joseph's Hospital continues to safely care for an average of 2-5 clients with COVID-19, with the capacity for 6 bed spaces. The cohort unit has been an effective isolation strategy to safely manage positive COVID-19 clients with mild symptoms on site and avoid transferring and adding to bed pressures in acute care.

Vaccination Clinics – Vaccination clinics on-site continue to offer clients vaccination and improve inpatients vaccination status. Clients <30 years of age have the opportunity to receive Pfizer vaccine. At last count, 91% have a first dose, 89% have a second dose, and 86% have a 3rd dose of vaccine.

HERE FOR OUR

Clients

Diabetes Health

Diabetes Health has approximately 150 clients that require insulin pumps and supplies in order to manage their disease effectively. Clients can receive financial assistance for these supplies by applying to the Assistive Device Program (ADP) that requires them to participate in an annual physician assessment. Diabetes Health is pleased to announce that Dr. Graham, an Internal Medicine Physician, will

perform these annual assessments and attend monthly rounds with the Diabetes Health team to discuss complex cases and care plans. This enhanced medical service will begin March 2022.

Care
Compassion
Commitment

Leadership Team Report

March 2022



Geriatric Post Discharge Remote Care Monitoring Pilot Results

The pilot Remote Care Monitoring (RCM) Program for High Risk Geriatric Clients discharged from the Geriatric Assessment and Rehabilitative Care Unit supports clients after discharge for 30 days. The program has successfully supported 47 clients since November 4th, 2021 and linked 19 clients directly post discharge through deployment of Community Paramedicine; connection with Primary Care; communication with the Homecare provider and referral to Rapid Access Nursing. The pilot demonstrates signs of smooth transitions to home for high risk seniors, improves self-maintenance at home and avoidance of Emergency Room (ER) visits. Only two clients were advised to go the ER and one admitted for an acute condition. The program supported one client to go home for a brief period with family before returning to the Palliative Care Unit.

Substance Use Prevention and Reduction (SUPR) Programming

Nicole Keir, Psychometrist with the Mental Health Rehabilitation Program kicked off a new group for clients who are looking to reduce and prevent substance use in order to improve health and optimize well-being. The focus of the group is to increase knowledge and the use of strategies to prevent problematic substance use, to identify causes, and emphasize prevention and protective factors. The group will be offered weekly in a group setting for any clients interested in participating.

HERE FOR OUR

Partners

Learning Essential Approaches to Palliative Care (LEAP)

The Regional Palliative Care Program and Centre for Education on Research on Aging & Health hosted an online Learning Essential Approaches to Palliative Care (LEAP) with a target for participants in the region. Participants receive in depth learning on essential skills and competencies of palliative care which includes pain and symptom management; goals of care and decision making conversations; assessment and management of delirium; and how to support a person with depression, anxiety and grief. On February 15th & 17th, twenty-five interprofessional participants from across the region participated in the online

learning, and the group included SJCG staff members.

Hip and Knee OsteoArthritis (OA) Conservative Management Pilot

Since 2018, the North West Regional Rehabilitative Care Program has coordinated the Hip and Knee OA Conservative Management Pilot across 10 publicly-funded hospital sites, including SJCG, providing access to an effective, evidence-based program called GLA:D (Good Life with osteoArthritis in Denmark). The GLA:D program includes the delivery of group-based education and exercise programs and is available in person and virtually. The program has been accessed by clients as a non-surgical treatment option with great success, allowing them to remain active in their communities. Since inception in the Northwest, there have been 43 health care professionals certified, 764 referrals to the program, 564 assessments completed, and approximately 300 people have completed the program. Data shows significant improvements in pain, function, self-efficacy and patient satisfaction with the program and outcomes. Sixty-five per cent of individuals report they are less likely to consider surgery in the next year. Preventing or delaying the need for joint replacement surgery avoids \$1.5 million in surgical costs for the region. It provides a cost-effective, evidence-based rehabilitation option to prevent further patient decline and address intermediate pressures related to lengthy physiotherapy waiting lists for those with chronic conditions. Furthermore, it's been a valuable upstream solution at the community level to address long-term pressures related to future chronic disease.

Care
Compassion
Commitment

HERE FOR OUR

People

SJCG Research Showcase

Denise Taylor, Manager of the North West Regional Rehabilitative Care Program, presented with co-investigators Helle Moeller and Joan Rae at the SJCG Research Showcase, February 9, 2022, the project: Supporting elders living with frailty in remote Indigenous communities in Northwestern Ontario: Developing the role of a community rehabilitation worker, on behalf of the many research team members including Alison Denton, Manager of the North West Regional Seniors Care Program.

HERE FOR OUR

Future

Youth Residential Evaluation

Frayme's Great Big Stories Substance Use Stream Grant Program has selected the *Youth Residential Evaluation* project at the Sister Margaret Smith Centre to receive funding. The Program was launched by Frayme to help capture, share and spread stories of success in the creation, design, uptake and refinement of youth and family centred, inclusive, diverse, collaborative and equity-enhancing efforts addressing problematic substance use for youth and their families. Funding is used to support Canadian not-for-profits and charitable organizations, like

SJCG, to increase their capacity and measure the success of their youth-centred policies, programs, services or initiatives, and share their stories with the rest of the sector. We are excited to be among the six organizations helping to shape the future of substance use treatment for youth and their families in Canada.

Northern Ontario Psychology Internship Consortium

The Northern Ontario Psychology Internship Consortium has continued to add partners to the consortium to support a variety of internship positions in Northwestern Ontario. A seventh partner was added, Sullivan + Associates Clinical Psychology, to offer a private practice opportunity for interns.

Student Placements

Student placements are an important and highly valued initiative to build capacity in both Seniors' Supportive Housing and Long-Term Care. During February, Seniors' Supportive Housing began placement options for students from the Personal Support Worker, Therapeutic Recreation program and Social Work programs. 10 RPN students started to learn alongside clinical staff at Bethammi Nursing Home while Social Work and Therapeutic Recreation students continued their placements. At Hogarth Riverview Manor, 142 first year RN students, 7 RPN and one Therapeutic Recreation student were either continuing or starting their placements during the month.